



K-ECO 1508

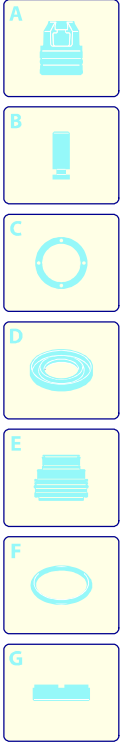
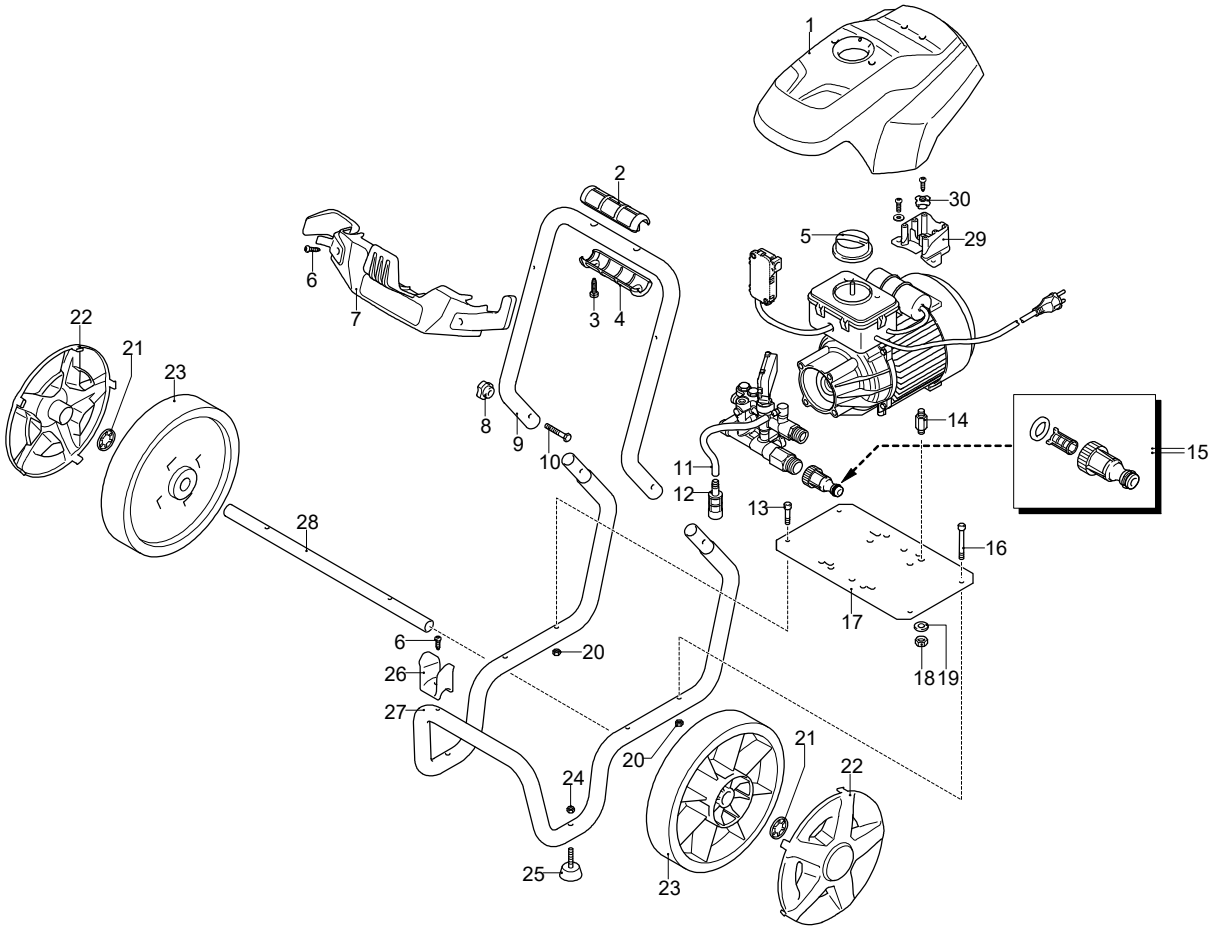
Versione:

Matricola:

Codice: **26409**

 **230 V - 50 Hz**

 **schuko**



Validità	Pos.	Codice	Denominazione	Q
	1	4320081	Carter	1
	2	3580180	Manopola	1
	3	2100300	Vite	2
	4	3580090	Manopola	1
	5	3780072	Manopola	1
	6	2060200	Vite	3
	7	4320050	Porta-accessori	1
	8	50019	Pomello	2
	9	4320020	Telaio	1
	10	50037	Vite	1
	11	1341030	Filtro	1
	12	2180370	Tubo detergente	1
	13	1345180	Vite	2
	14	1462400	Colonnetta	4
	15	3082130	Kit attacco acqua	1
	16	2480310	Vite	2
	17	4320030	Piastra	1
	18	480640	Dado	4
	19	1680960	Rondella	4
	20	2480320	Dado	4
	21	380620	Rondella	2
	22	4320270	Protezione	2
	23	4320280	Ruota	2
	24	3000170	Dado	2
	25	4320220	Antivibrante	2
	26	3600070	Porta-accessori	1
	27	4320010	Telaio	1
	28	4320040	Tubo	1
	29	4320110	Supporto	1
	30	2600100	Pressacavo	1



**ANNOVI
REVERBERI**
The Power of Experience

11/05/2017

K-ECO 1508

Versione:

Matricola:

Codice:

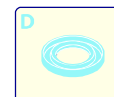
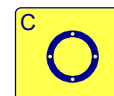
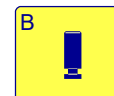
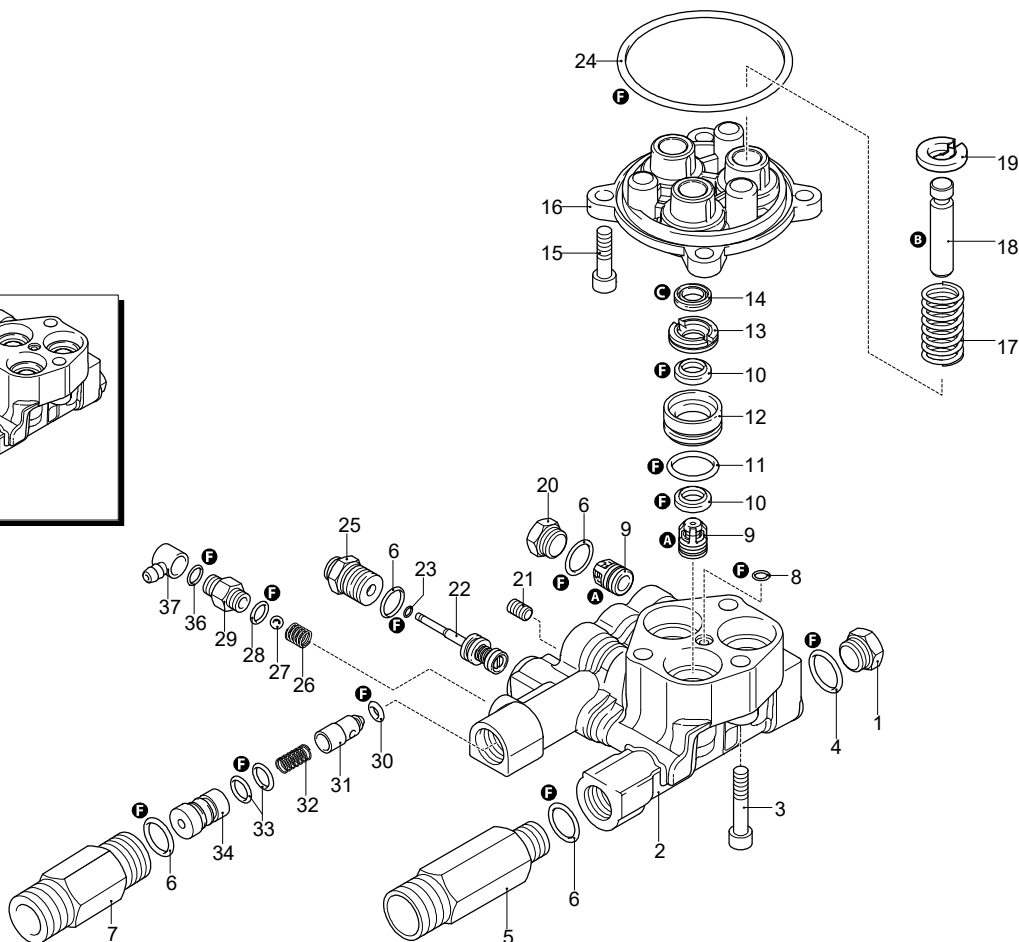
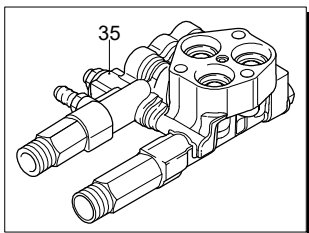
26409



230 V - 50 Hz



schuko



Validità	Pos.	Codice	Denominazione	Q
	1	880581	Tappo	1
	2	2900430	Testa	1
	3	800220	Vite	3
	4	820510	Guarnizione OR	1
	5	2900100	Raccordo	1
	6	740290	Guarnizione OR	6
	7	2840400	Raccordo	1
	8	480480	Guarnizione OR	1
	9	2849051	Valvola completa	6
	10	2200141	Tenuta acqua	6
	11	770590	Guarnizione OR	3
	12	2840550	Boccola	3
	13	2840540	Boccola	3
	14	1683500	Tenuta olio	3
	15	2900500	Vite	4
	16	2900020	Guida pistone	1
	17	2901170	Molla	3
	18	2840530	Pistone	3
	19	2840050	Fermo	3
	20	2840130	Tappo	3
	21	2840470	Vite	1
	22	2909005	Premontaggio molla	1
	23	1120680	Guarnizione OR	1
	24	3040270	Guarnizione OR	1
	25	2900130	Raccordo	1
	26	1560520	Molla	1
	27	1250280	Sfera	1
	28	480480	Guarnizione OR	1
	29	1344620	Raccordo	1
	30	1460430	Guarnizione OR	1
	31	2901070	Otturatore	1
	32	3780450	Molla	1
	33	800560	Guarnizione OR	2
	34	2901060	Iniettore	1
	35	2909139	Premontaggio testa	1
	36	480560	Guarnizione OR	1
	37	2320180	Portagomma	1
	A	2233	Kit valvole	1
	B	2313	Kit pistoni	1
	C	42124	Kit tenute olio	1
	F	42698	Kit guarnizioni	1

UN_CE_1640-DQ

K-ECO 1508


Versione:

Matricola:


Codice:

26409

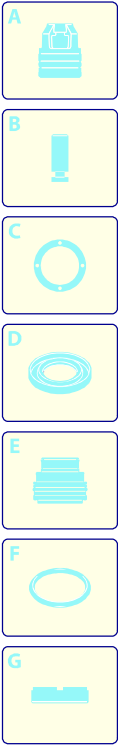
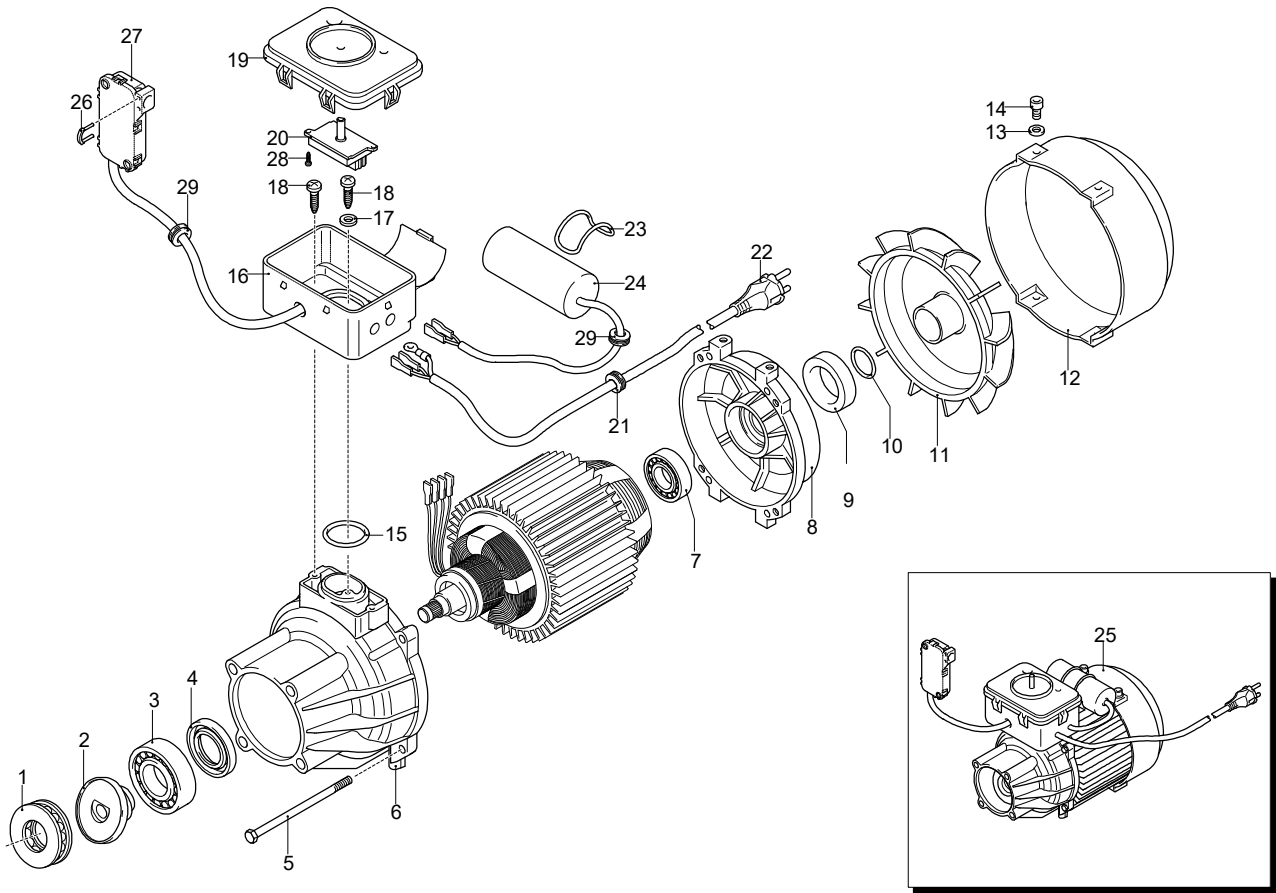
11/05/2017



230 V - 50 Hz



schuko



Validità	Pos.	Codice	Denominazione	Q
	1	2900170	Cuscinetto	1
	2	2900260	Piattello	1
	3	1780490	Cuscinetto	1
	4	1460530	Tenuta olio	1
	5	2320090	Vite	4
	6	2900010	Corpo pompa	1
	7	1460590	Cuscinetto	1
	8	1460040	Scudo	1
	9	1461200	Tenuta olio	1
	10	394280	Guarnizione OR	1
	11	1460370	Ventola	1
	12	4240520	Convogliatore	1
	13	1680960	Rondella	2
	14	1460460	Vite	2
	15	660170	Guarnizione OR	1
	16	2320132	Scatola	1
	17	1262400	Rondella	1
	18	2020570	Vite	3
	19	3780321	Coperchio	1
	20	2900420	Interruttore	1
	21	2021480	Passacavo	1
	22	3780630	Cavo	1
	23	2320640	Guarnizione OR	1
	24	1982590	Condensatore	1
	25	44811	Motore	1
	26	2022201	Forcella	1
	27	2029753	Premontaggio scatola TSS	1
	28	2000210	Vite	2
	29	1462900	Passacavo	2



11/05/2017

K-ECO 1508

Versione:

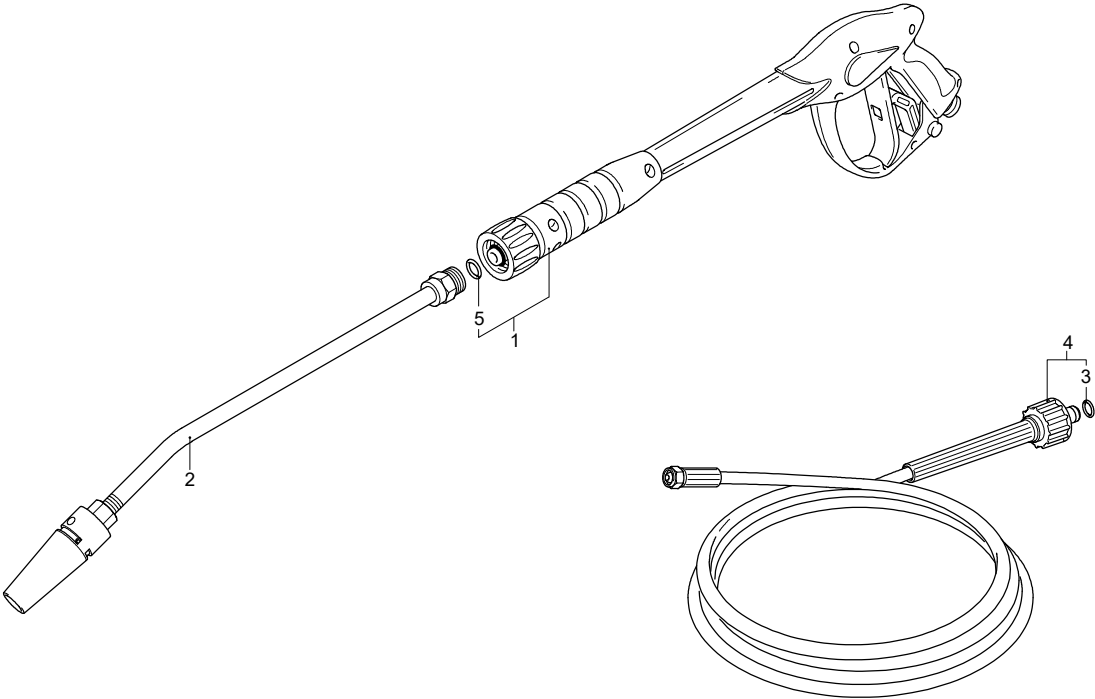
Matricola:

Codice:

26409

230 V - 50 Hz

schuko



- A
- B
- C
- D
- E
- F
- G

Validità	Pos.	Codice	Denominazione	Q
	1	40925	Pistola	1
	2	41269	Lancia	1
	3	2000770	Guarnizione OR	1
	4	3780491	Tubo alta pressione	1
	5	391000	Guarnizione OR	1