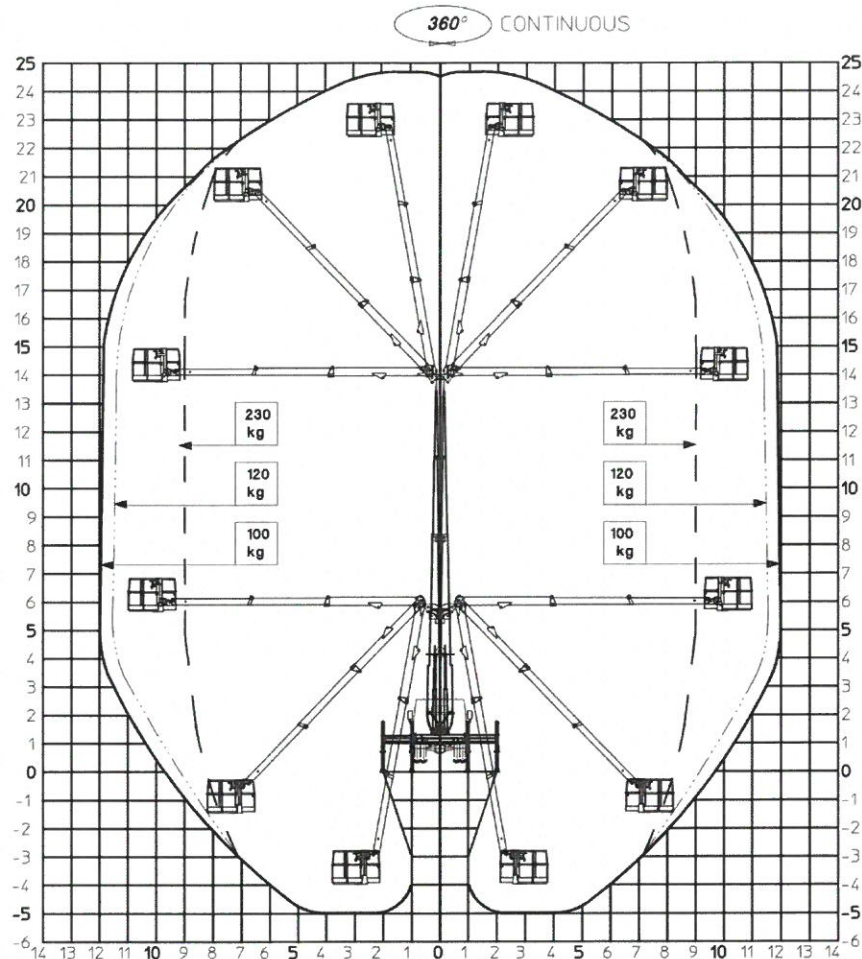


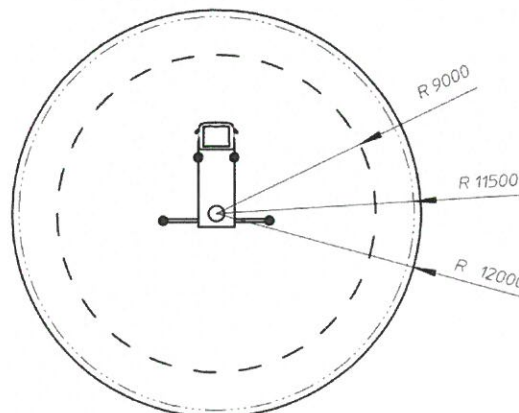
5.5 AREA DI LAVORO

5.5.1 Area di lavoro con traverse estese



STABILIZZAZIONE ESTESA

PORTATE	
— — —	= 230 kg
- - - - -	= 120 kg
—————	= 100 kg



CELA SRL

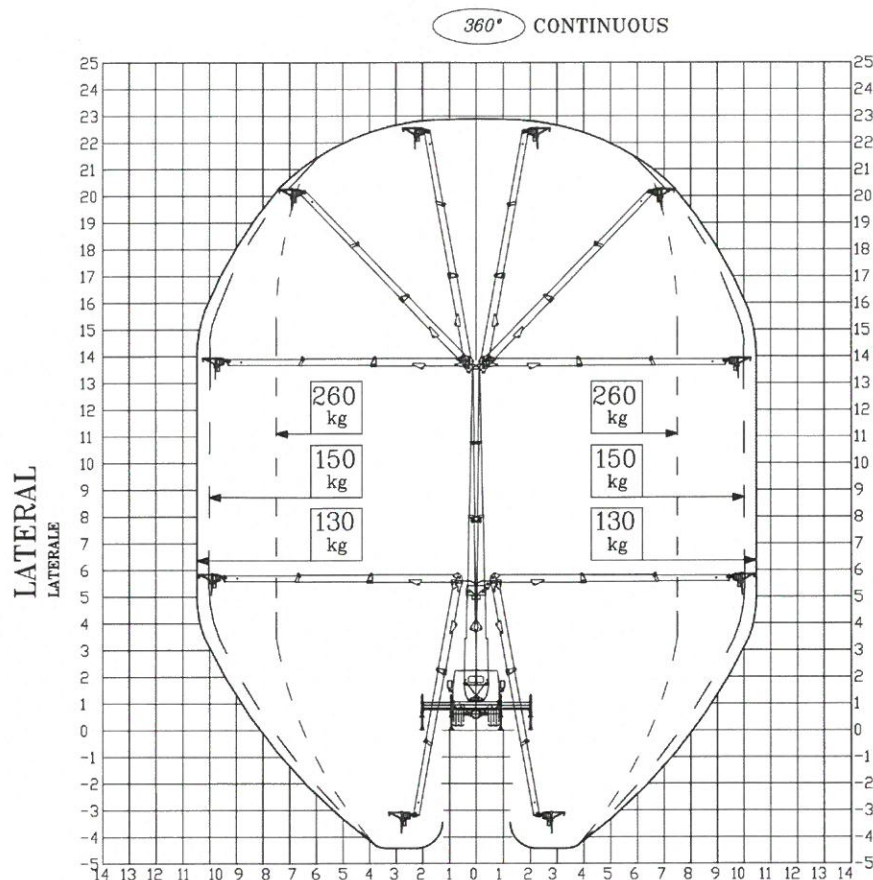
Via Dei Ponticelli trav. I^a n°2/4 – 25040 CORTE FRANCA (BS) ITALY – Tel 0039 030 98 84 084 r.a. – Fax 0039 030 98 45 15
[http:// www.cela-it.com](http://www.cela-it.com) / e-mail info@cela-it.com

Rev. 00

Pagina 33 di 118

4.5 AREA DI LAVORO

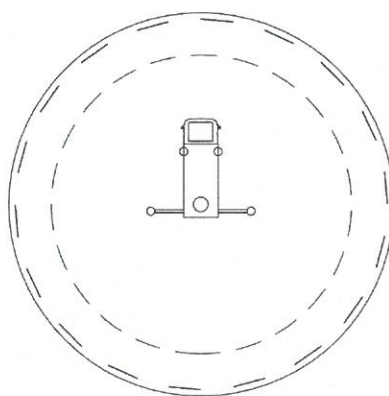
4.5.1 Area di lavoro con traverse estese



OUTRIGGER OUT

TRAVERSE ESTESE

LOADS-PORTATE	
— — —	= 260 kg
— —	= 150 kg
—	= 130 kg

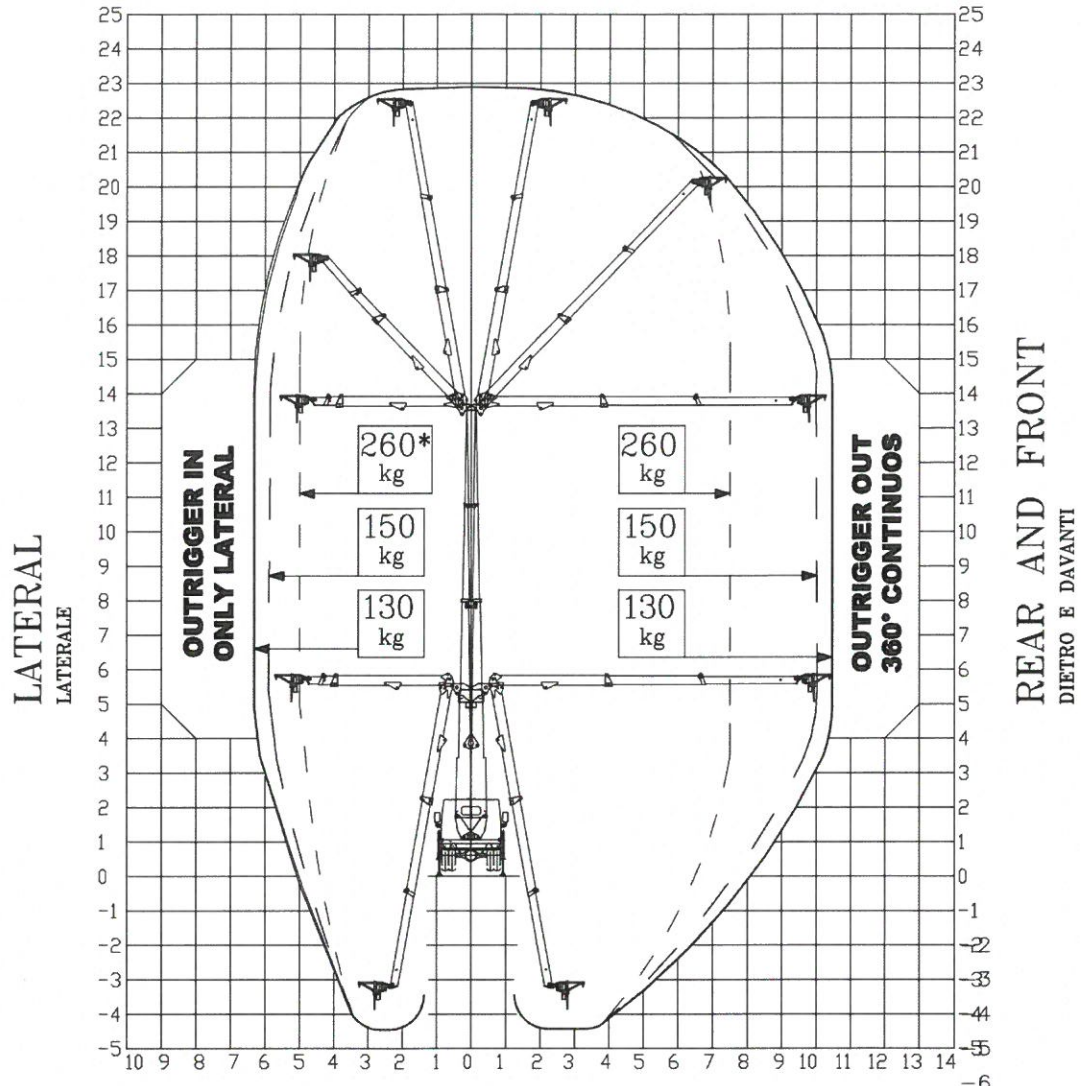


CELA SRL

Via Dei Ponticelli trav. 1^a n°2/4 – 25040 CORTE FRANCA (BS) ITALY – Tel 0039 030 98 84 084 r.a. – Fax 0039 030 98 45 15

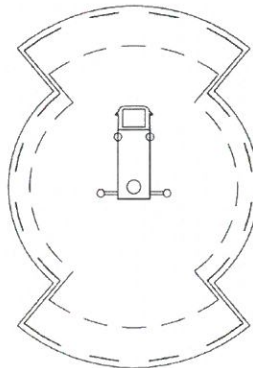
<http://www.cela-it.com> / e-mail info@cela-it.com

4.5.2 Area di lavoro con traverse chiuse /parzialmente in sagoma / 180°



OUTRIGGER PARTIAL OPEN

TRAVERSE PARZIALMENTE ESTESE



* = ONLY WITH OUTRIGGER PARTIALLY OPEN

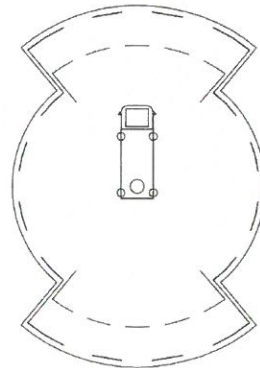
** = SOLD CON TRAVERSE PARZIALMENTE ESTESE

LOADS-PORTATE

---	= 260 kg
---	= 150 kg
---	= 130 kg

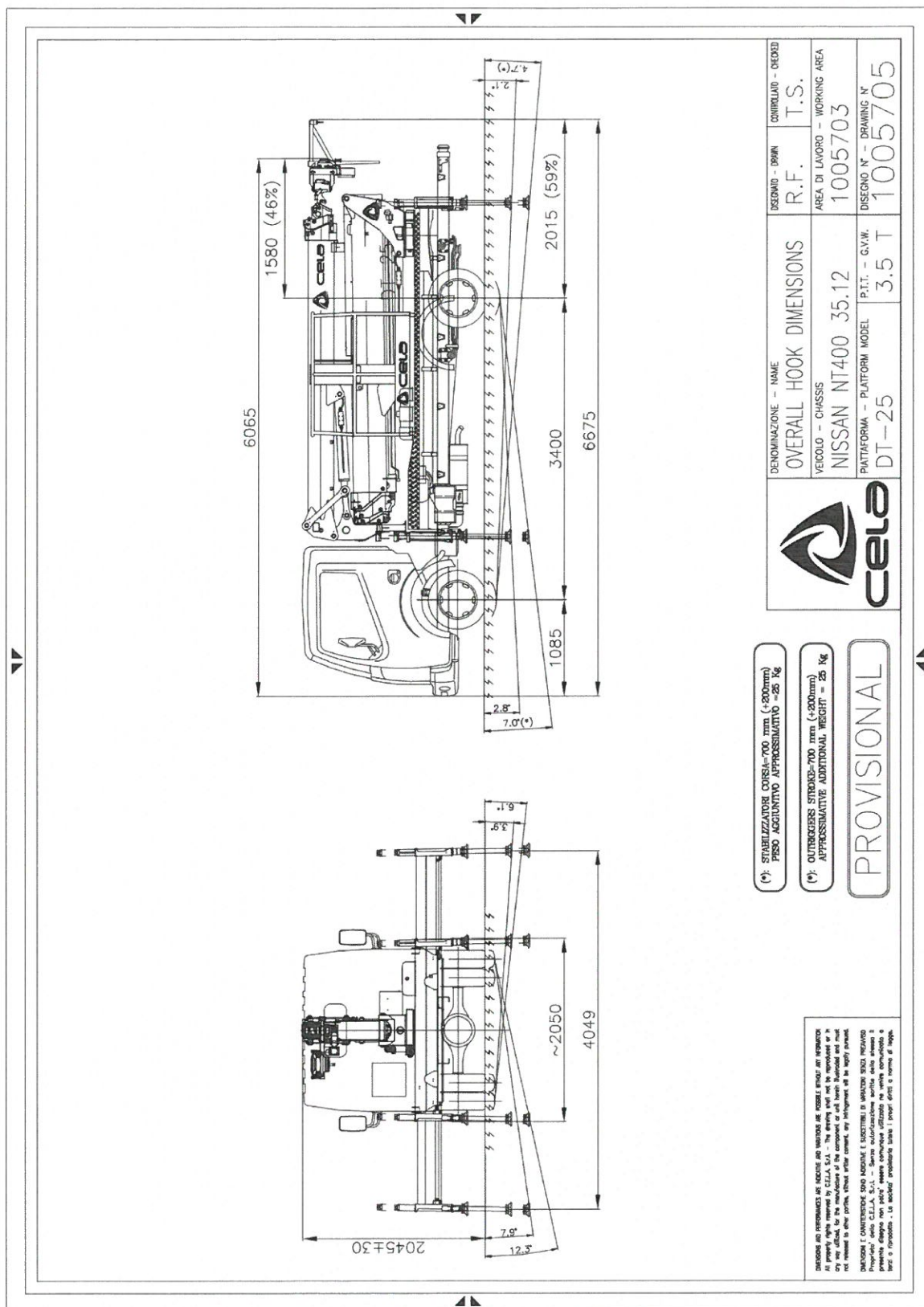
OUTRIGGER IN

IN SAGOMA



MANUALE USO E MANUTENZIONE DT 25/G Gru Caricatrice

4.6 SCHEMA GENERALE

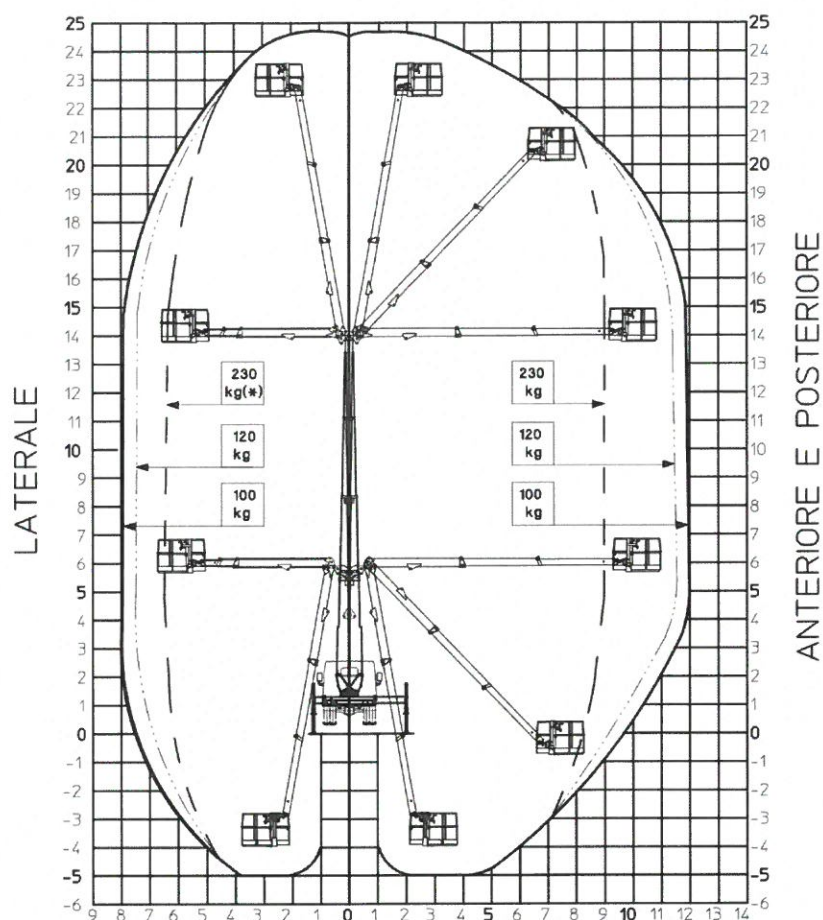


CELA SRL

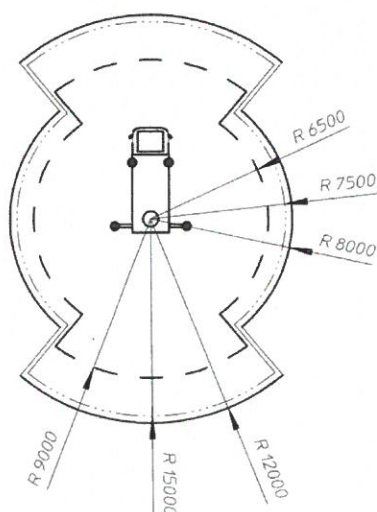
Via Dei Ponticelli trav. I^a n°2/4 – 25040 CORTE FRANCA (BS) ITALY – Tel 0039 030 98 84 084 r.a. – Fax 0039 030 98 45 15

<http://www.cela-it.com> / e-mail info@cela-it.com

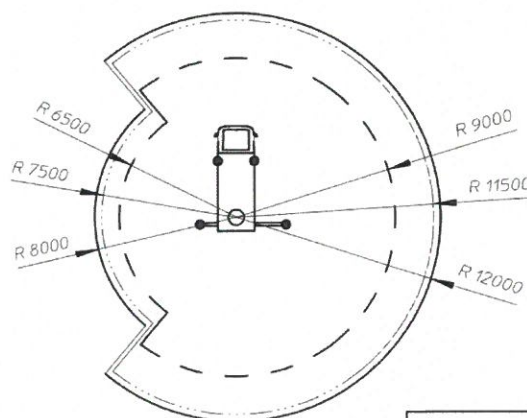
5.5.2 Area di lavoro con traverse parzialmente in sagoma / 180°



STABILIZZAZIONE PARZIALE



STABILIZZAZIONE PARZIALE / 180°



PORTATE

— — —	= 230 kg
- - - - -	= 120 kg
.....	= 100 kg

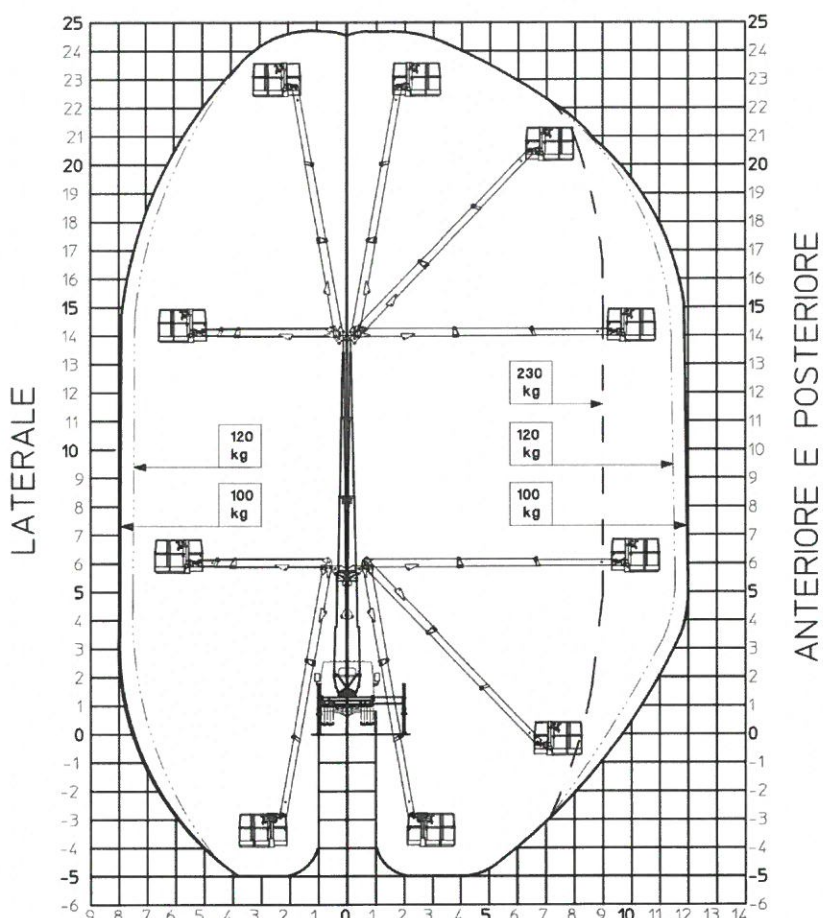
CELA SRL

Via Dei Ponticelli trav. I^a n°2/4 – 25040 CORTE FRANCA (BS) ITALY – Tel 0039 030 98 84 084 r.a. – Fax 0039 030 98 45 15
[http:// www.cela-it.com](http://www.cela-it.com) / e-mail info@cela-it.com

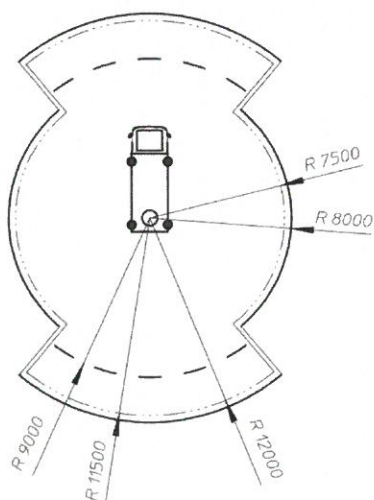
Rev. 00

Pagina 34 di 118

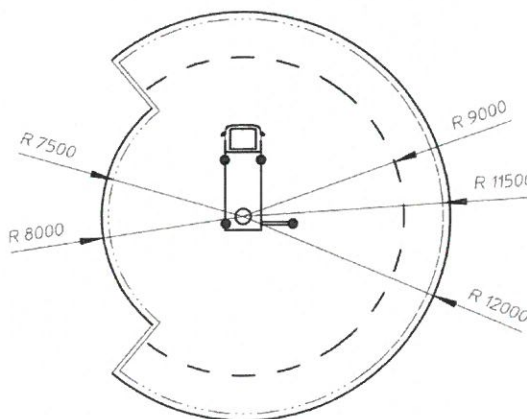
5.5.3 Area di lavoro con traverse in sagoma / 180°



STABILIZZAZIONE IN SAGOMA



STABILIZZAZIONE IN SAGOMA / 180°



PORTATE

---	= 230 kg
- . - . -	= 120 kg
—	= 100 kg

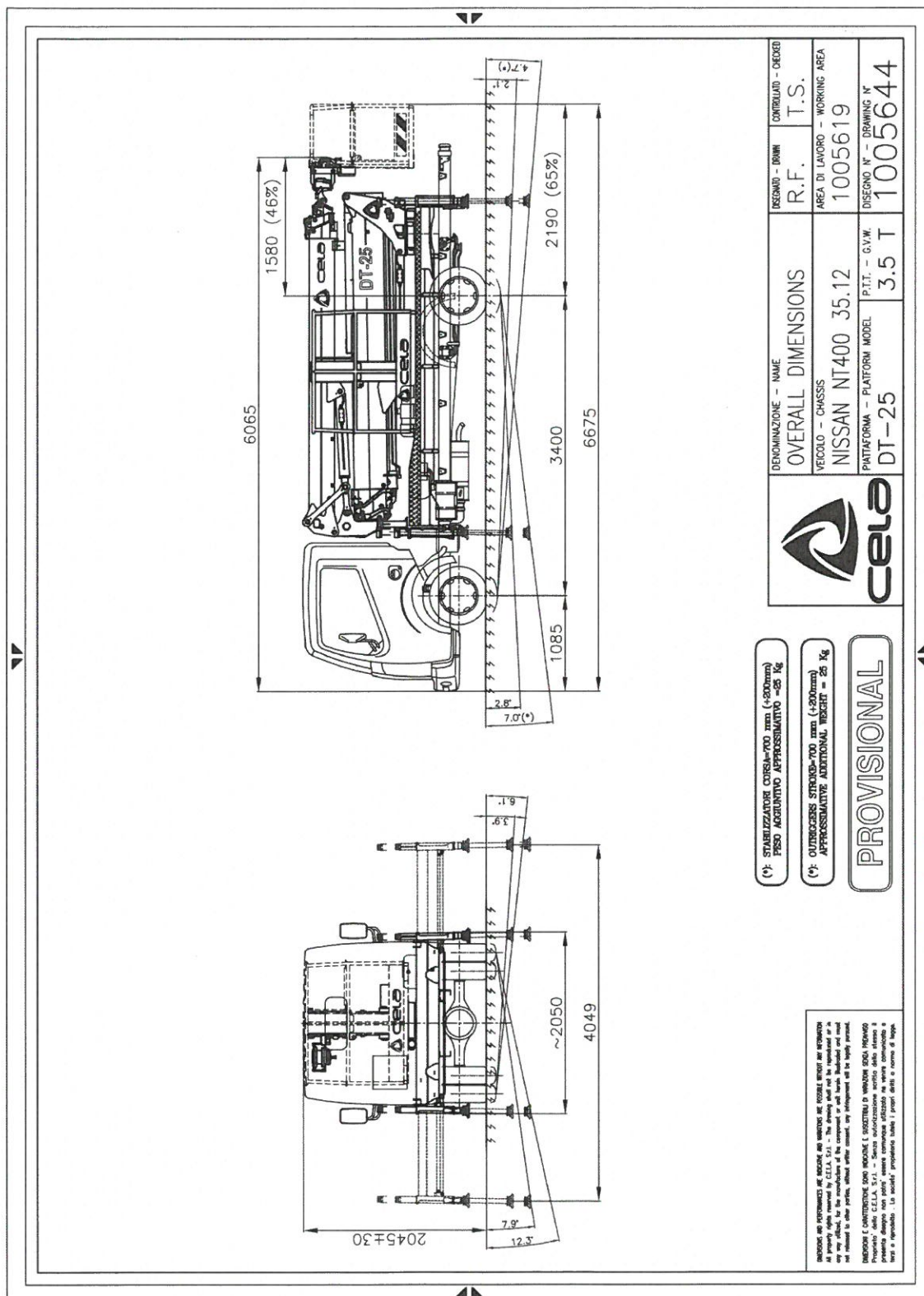
CELA SRL

Via Dei Ponticelli trav. I^a n°2/4 – 25040 CORTE FRANCA (BS) ITALY – Tel 0039 030 98 84 084 r.a. – Fax 0039 030 98 45 15
[http:// www.cela-it.com](http://www.cela-it.com) / e-mail info@cela-it.com

Rev. 00

Pagina 35 di 118

5.6 SCHEMA GENERALE



CELA SRL

Via Dei Ponticelli trav. I^a n°2/4 - 25040 CORTE FRANCA (BS) ITALY - Tel 0039 030 98 84 084 r.a. - Fax 0039 030 98 45 15
[http:// www.cela-it.com](http://www.cela-it.com) / e-mail info@cela-it.com